

Results



Passageway is certified by the International Center for Clubhouse Development and is one of over 400 clubhouse programs worldwide that follow innovative standards proven effective over six decades.

Passageway gets proven results for people with mental illness. Some examples include:

- ◆ reduced hospitalization and recidivism
- ◆ reduced incarcerations
- ◆ increased employment
- ◆ improved educational outcomes
- ◆ enhanced social relationships
- ◆ decreased substance abuse
- ◆ better overall wellness
- ◆ greater quality of life satisfaction
- ◆ cost effectiveness - compared to other mental healthcare approaches

"After belonging to Passageway for thirteen years, my life has changed for the better. I have many friends now, including friends in the community. I have been able to do part-time work. I was able to pay off my credit cards. I reduced my stress level and was able to quit smoking. The last time I was hospitalized for my mental illness was ten years ago. Passageway helped give me this chance and continues to counsel and advise me." - Gano

Place

A clubhouse guarantees a right... to a place to come, meaningful work and relationships, and a place to return.



"Passageway has changed my life. I used to be afraid to be around people. My work at Passageway has built my confidence, given me computer experience, and the chance to make choices. It teaches me that even though I am mentally ill, I can be productive. It is comforting to know that I am part of a group of people that understands me." - Chris



passageway

305 15th Street
Des Moines, IA 50309
Tel: 515.243.6929
Fax: 515.243.1747
www.passagewayiowa.org
info@passagewayiowa.org

Passageway is a 501 (c) (3) Organization. All donations are eligible for tax deductibility. This service is funded in part with Polk County funds.



passageway

moving forward together

Community

Program

Clubhouse

Place

Results



Offering hope and opportunity to people with mental illness.

Tel: 515.243.6929

Community

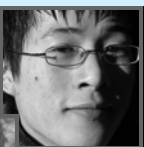
Approximately one-in-four individuals suffer from a diagnosable mental disorder in a given year. Without treatment the consequences of mental illness for the individual and society are staggering: unnecessary disability, unemployment, substance abuse, homelessness, incarceration, suicide and wasted lives.

Mental illness is treatable. There is hope for people who have it.

Passageway is a dedicated community of people working together to support individuals living with mental illness.

Passageway is a restorative environment for people who have had their lives drastically disrupted and need the support of others who believe that recovery from mental illness is possible for all.

At **Passageway**, people who are challenged by mental illness develop confidence and take ownership of their lives and future.



Program

Who is your 1 in 4?

Possibly your ... mother, son, sister, father, neighbor, friend, husband, daughter, co-worker, wife, schoolmate...or maybe even you.

Passageway is a clubhouse organized to support individuals living with the effects of mental illness. Through participation in a clubhouse, people are given opportunities to rejoin the worlds of friendships, family, meaningful work, employment, education, and to access the services and supports they may individually need.

Passageway is a membership organization open to anyone who has a history of mental illness. Having membership in an organization means that an individual has both shared ownership and shared responsibility for its success.



At **Passageway**, assistance with housing, benefits, education, crisis intervention and employment flow naturally from this community of support.

"Before joining Passageway I was depressed, suicidal, and I frequently harmed myself. Passageway has changed my life. If the clubhouse wasn't there, I don't think I would be here today. Because of Passageway, I know that there are people out there who care about people like me."
- Pam

Clubhouse



Clubhouse communities are built upon the belief that every member can sufficiently recover from the effects of mental illness to lead a personally satisfying life. It is organized around a belief in the potential for productive contributions from everyone, even the member struggling with the most severe effects of mental illness.

One of the key components of the clubhouse philosophy is an emphasis on the power of work. **Passageway** focuses on work both within the program and within the community. Meaningful work is the foundation from which people build self-esteem and develop supportive relationships.

Members work side-by-side with **Passageway** staff in all aspects of operating the program. Every member is not only wanted, but also needed because the program could not function without the involvement of all members.